

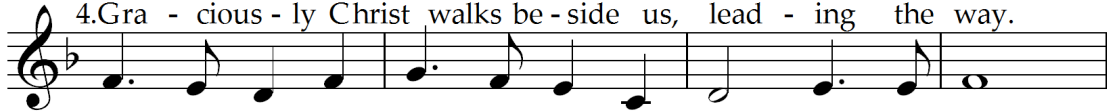
Walking Slowly to Emmaus

J. Dudley Weaver, Jr.

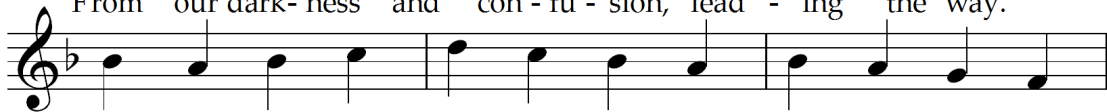
AR HYD Y NOS



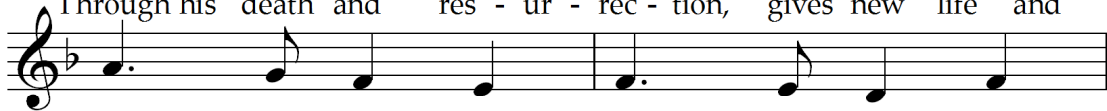
1.Walk - ing slow - ly to Em - ma - us, they trav - eled on.
2.When up - on the road they met him, walk - ing their way,
3.When we're lost, con - fused, and wear - y, we stum - ble on.
4.Gra - cious - ly Christ walks be - side us, lead - ing the way.



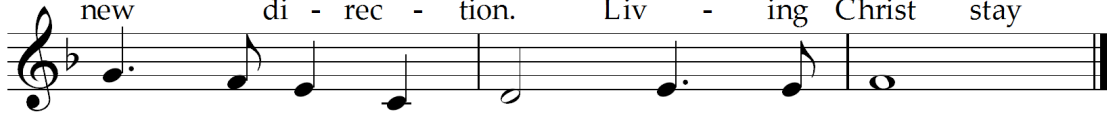
From the cross, its pain and ques - tion, they trav - eled on.
Told him all that had be - set them, walk - ing their way.
Search - ing for new hope, new vis - ion, we stum - ble on.
From our dark - ness and con - fu - sion, lead - ing the way.



With his death, their hopes had van - ished; truth and love from
Nei - ther knew nor re - cog - nized him, till the bro - ken
When up - on the road we meet him, Help us, Lord, to
Through his death and res - ur - rec - tion, gives new life and



earth seemed ban - ished. Walk - ing slow - ly
bread he gave them, Then their eyes were
re - cog - nize him In the face of
new di - rec - tion. Liv - ing Christ stay



to Em - ma - us, they trav - eled on.
o - pened to him, walk - ing their way.
friend or stran - ger, journ - ey - ing on.
with us al - ways, lead - ing the way.

Text Copyright © 2013, J. Dudley Weaver, Jr.
(Permission given for one-time church bulletin use.)